

# Zigbee Smart Switch



## Features:

1. Hight quality crystal tempered glass panel design,never fade.
2. With blue LED indicator,very distinguished.
3. Check and Control the Status of the Smart Switch by Mobile APP.
4. Backlight indicator ON/OFF can be by mobile APP.
5. You can set whether to keep the memory function after power off by mobile App : power-off/Power-on/memory of power-off
6. Applicable to incandescent lights, fluorescent lamps, led. lamps ,water heater,ventilator and motor etc.
- 7.Support Amazon Alexa and Google Assistant etc.

- Page 1 -

## Product parameters

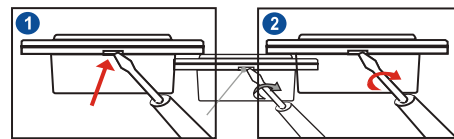
Working voltage: AC 100-240V 50-60Hz  
Maximum power: 1000W/gang  
Product power consumption: 0.5W  
Working temperature: -10°C-60°C  
Shell material: PC flame retardant material  
Size: 120\*72\*32.5mm

## Package

1. Smart switch\*1
2. Screw\*2
3. Manual\*1

## Installation

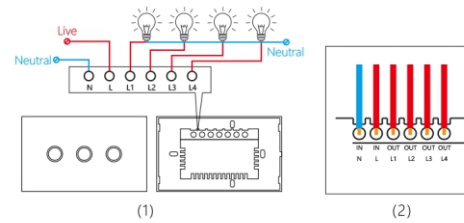
1. Remove the cover with a small screwdriver (1)
2. Turn the key to open the window (2)



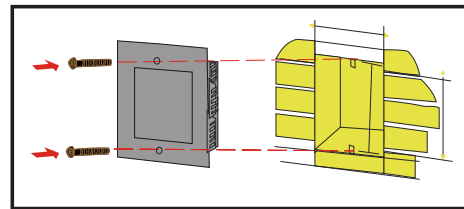
- Page 2 -

## 3. Wiring:

Connect wire to the correct terminal and tighten the screws.



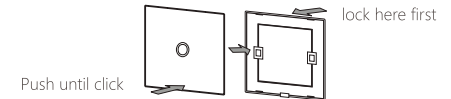
## 4. Fix the switch to the wall



- Page 3 -

5. Cover the panel and connect the power. (After the power is on,please wait for 3 seconds,then touch to turn on lamps.)

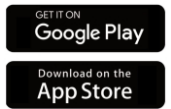
If you make touch testing without glass panel cover ,please turn off general power after testing ,then put on glass panel cover to switch ,and turn on general power again .



Please scan QR code below to download APP



Smart Life App



If turn on the Bluetooth of mobile phone, it will be configured more quickly

How to configure switch with Smart Life APP ?

Mode 1: Power on the device and confirm indicator is blinking slowly .Then make configuration operations according to the APP's guidelines.

Mode2:Hold any button of panel for 5s until the indicator is blinking slowly. Then make configuration operations according to the APP's guidelines.

How to remove the device from the APP ?

Solution 1:Remove device from APP interface directly

Solution 2: Hold any button of panel for 5s

Attention: Configure mode exit after 3min no operation

- Page 4 -

## APP Connection Operation Method

1. Register an account in the app application.
2. On the device, press any key for 5 seconds.
3. The indicator light will flash quickly.
4. The zigbee switch is connected to the zigbee gateway.
5. The zigbee gateway network cable is connected to the home WIFI to realize the shared Internet network



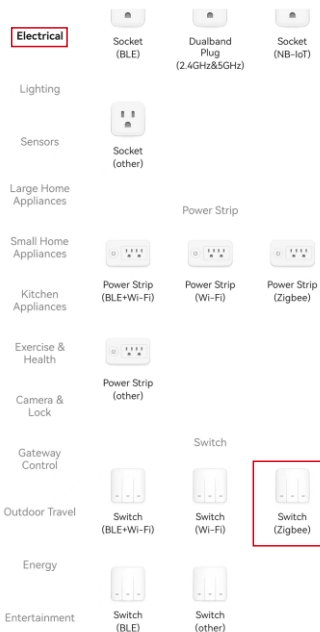
- 6.Click the "+" button in the upper right position of the APP and select Electrical - switch (Zigbee).

7. After entering pairing, prompt for WiFi network name and password, and follow the APP prompts to operate

- Page 5 -

11:12

Add Device



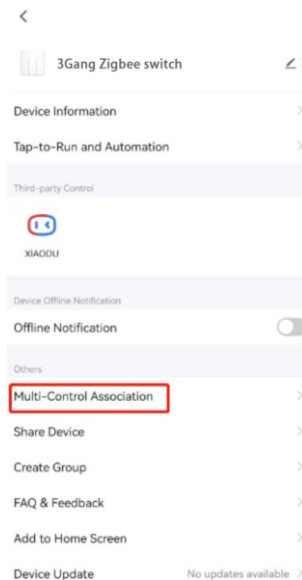
- Page 6 -

## How to set up the 2way APP

1. APP operation 2way settings

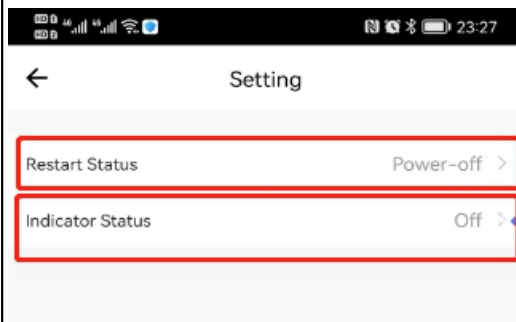
2. Switch installation method:

Switch 1: Normal wiring installation (requires connecting to the bulb), Switch 2: Installing N neutral wire and L live wire (Switch 2 does not require connecting to the bulb)



- Page 7 -

3. Set the power outage memory function and set the button backlight to turn on/off.



## Warranty

Product requires professional installation by an electrician engineer. Non professional personnel should not install it to avoid damaging the switch product.

1. No warranty: unauthorized modification or modification of the electronic control circuit of the product, disassembly of the internal electronic motherboard, incorrect connection of wires, damage to the switch, shell scratches, surface damage, and glass damage.
2. Warranty period: 12 months

- Page 8 -